



REGIONE SICILIANA
Assessorato del territorio
e dell'ambiente

ITA040011

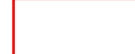




La Montagnola e Acqua Fitusa

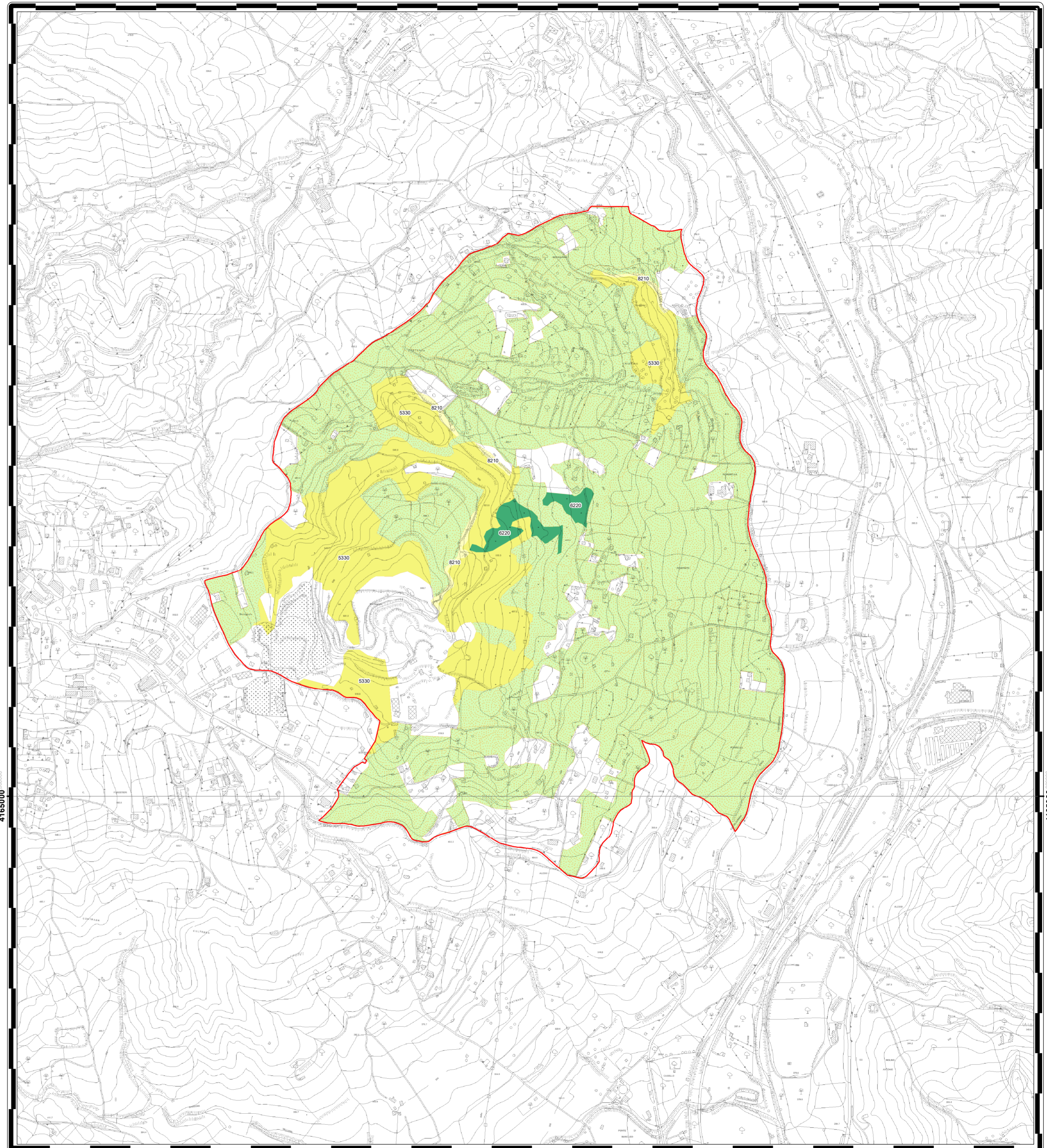
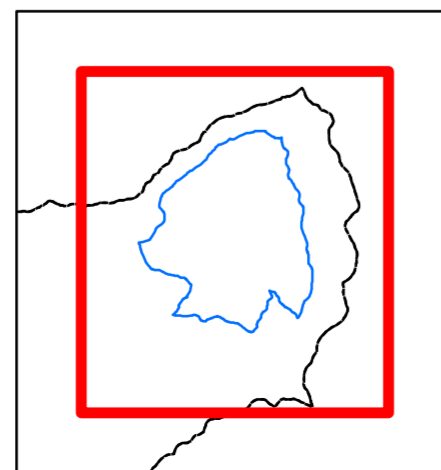
Tavola 1 di 1
Scala 1:10.000



Gennaio 2026

Legenda

-  Perimetro sito
-  5330 - Arbusteti termomediterranei e pre-desertici
-  6220* - Percorsi substeppici di graminacee e piante annue dei Thero-Brachypodietea
-  8210 - Pareti rocciose calcaree con vegetazione casmofitica
-  Habitat delle specie



4165000

4165000